

RV Consumer e-Magazine

October 2014

Volume 4

Issue 10



DISCOVER

LEARN

ENJOY

RV 2015

Inside America's Largest RV Show

RV DIY - Water Heater Tune-Up 5 Trailer Towing Quick Tips

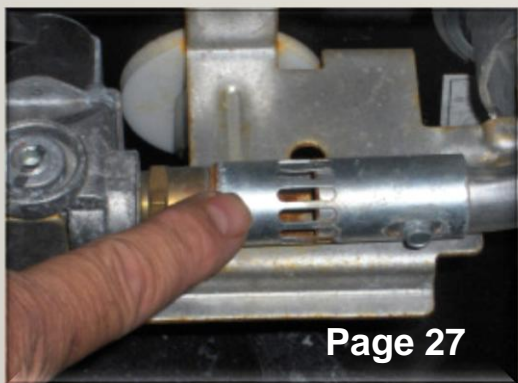
[SUBSCRIBE](#)

www.rvconsumer.com

Page 6



Page 27



Page 30



IN THIS ISSUE

6 RV 2015: Inside America's Largest RV Show

Take a walk-through America's Largest RV Show with Mark Polk and see what's new in the world of RVs for 2015.

27 RV DIY—RV Water Heater Tune-Up

Discover some simple preventive maintenance steps to keep your RV water heater in top operating condition.

30 5 Trailer Towing Quick Tips

Do you tow a travel trailer? If so here are 5 towing tips that are good to know.

DEPARTMENTS

4 Editor's Desk

26 RV Product Video Spotlight

All RV sewer hoses are not created equal. Find out why in these RV videos.

32 Lemon-Herbed Sweet & White Potatoes

Discover another great camping recipe from our friends The Cooking Ladies.



SUPERIOR SWAY CONTROL *lets you enjoy the journey*

THE ORIGINAL
Equal-i-zer®

SWAY CONTROL HITCH

[click for more info](#)

99% of our customers would recommend the Equal-i-zer® hitch to their friends. Why? Because Equal-i-zer hitch's superior sway control performance helps you reach your destination safely. Don't trust your safety to a lesser hitch. Get the peace of mind that comes from towing with the best Integrated Sway Control™ hitch available. **Get The Original Equal-i-zer Sway Control Hitch.**



The Equal-i-zer hitch's performance lets you enjoy a safer and more comfortable trip

For over 50 years the Equal-i-zer® hitch has been providing safe towing for families.

The Equal-i-zer hitch's superior design makes it the best performing sway control hitch on the market. Four steel on steel friction points (*known as 4-Point Sway Control™*) and excellent weight distribution – provide unmatched resistance to your trailer's attempts to sway. That's the premium performance that keeps families safe, and the premium performance that keeps owners recommending the Equal-i-zer hitch to their friends.



Tell all of your friends.

"Last year I moved cross-country...across Alaska...to the East coast. [The Equal-i-zer hitch] performed flawlessly through the mountains, on the open road...and even in the tightest of campsites. I have told all my friends they need this hitch for their towing."

- Devin T., Georgia



Made in the USA

Patent Pending

The Secret to the Equal-i-zer® hitch's Superior Performance is Integrated 4-Point Sway Control™

Call now to get a **FREE DVD** to see how much safer you can tow with an Equal-i-zer hitch.

(800) 478-5578

www.EqualizerHitch.com



Get Superior Sway Control - Get the Original Equal-i-zer® Sway Control Hitch.



I just returned from America's largest RV show in Hershey, Pa. I attend the Pennsylvania RV & Camping Show each year to get an early glimpse of the next model year RVs and RV products.

The show broke last year's attendance record, even with some bad weather on Saturday, with over 46,000 visitors. This is a good indicator that 2015 will be another strong year for the RV industry.

More good news for RV owners comes in the way of lower gas prices at the pump. On my drive home from the show I was listening to a radio show and experts on the topic predicted a steady downward trend in retail fuel prices into the holidays, and possibly continuing well into 2015.

Sit back, relax and take a look at what's new for 2015 from America's Largest RV Show.

Mark

www.rveducation101.com
www.rvconsumer.com



RV Consumer Magazine

150 Bay Ridge Rd.

Harrells, NC 28444

910-484-7615

www.rvconsumer.com

Publisher: RV Education 101

Editor: Mark J. Polk

mark@rveducation101.com

Contributing Writers:

Marketing Director: Dawn Polk

dawn@rveducation101.com

Advertising Information:

MEDIA KIT

Copyright 2011,2012,2013, 2014 RV Education 101, all rights reserved, RV Consumer Magazine is published by RV Education 101. This publication cannot be reproduced without the expressed written consent of the publisher. Advertisers and/or advertising agencies or representatives assume all liabilities for any printed content appearing in RV Consumer Magazine. Articles and opinions expressed in this publication may not be the same opinion of the magazine, its staff or its advertisers.

Don't miss a single issue
Subscribe NOW

Learn about your RV from the Pros

Want to learn more about your RV? Watch the most qualified RV education video channels on the web . All of our video content is produced in-house and we only produce and post RV information and video content that is relative to you, the RV owner. This makes finding what you are looking for easy!

[RV Education 101 You Tube Channel](#)

[RV101.TV Channel](#)

[RV DIY Channel](#)



Go where your RV takes you

RV 2015 - Inside America's Largest RV Show



Every September I attend the Pennsylvania RV & Camping Show, billed as America's Largest RV Show in Hershey, Pa. I look forward to this event for many reasons. I get to see and catch up with old friends, I get a good gauge as to where the RV industry is and where it is going and I get to talk to lots of RV industry insiders on every RV topic imaginable.

When I attend the show I like to have objectives that I want to accomplish. Since we are planning to update some of our older DVD titles next year much of my focus was on new technology being incorporated into RVs. I also wanted to cover the show in a way that would give RV owners, prospective owners and RV enthusiasts a look at what I considered to be innovative companies with new model year RVs that stood out and caught my attention.

Let's take a look at what I saw inside America's Largest RV Show for 2015



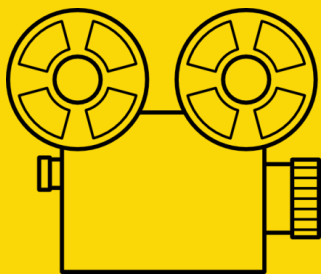
As could be expected there was a big selection of every type and size RV imaginable. What I was not expecting to see was a pink Minnie Winnebago travel trailer. It turned out that the pink Minnie was in support of breast cancer awareness, and for every pink Minnie

Inside America's Largest RV Show

sold \$1,000 will be donated to the American Cancer Society. Very Cool!



From there I strolled over to the Winnebago motorhome display where I saw the 2015 retro-style Winnebago Brave and Itasca Tribute models I read about a month or so prior to the show. There was a Winnebago representative at the display so I decided to see if I could get a quick interview. Watch the video to see what he had to say about the 2015 Winnebago Brave retro-style motorhome.



[Watch Winnebago Video](#)

I went from the retro-style Winnebago, with modern day amenities, to a motorhome that was ready to tackle any off-road adventure you might have in mind.



It was an Alpha expedition vehicle by [All Terrain Warriors USA](#) and it's not your average motorhome. The Alpha is built to fit on the 4X4 Mitsubishi Fuso perfectly. It comes equipped with an auto electric lift pop-top roof that opens the inside up nicely.



RV 2015 Special Preview



The front cabin has pass-through access to the camper and there is a queen size rear bed with storage underneath, and the 4 person dinette that converts into a double bed. The model I looked at had plenty of kitchen counter space and there was a private shower and toilet too.



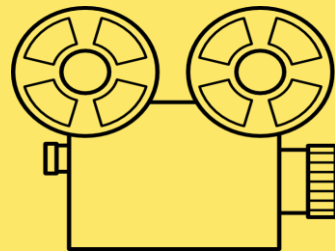
The exterior boasts dual spare tires, a 15,000 pound winch up front, solar panels, awnings, large potable and gray water holding tanks and a chassis capable of taking you anywhere your heart desires.

Speaking of beds in RVs, I have wondered for years why nobody came out with fitted sheets and bedding for RV beds.

Since there are size and space constraints when designing RVs the bed sizes used in RVs are different from conventional bed sizes. Some RV beds are longer or wider, making it difficult to find sheets that fit the bed properly.



At the show I stopped by the Lippert Components display where I talked to a sales representative who told me they decided to do something about the problem concerning fitted sheets for RVs. Watch the short interview.

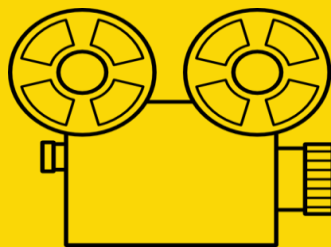


[Watch RV Fitted Sheets Video](#)

Inside America's Largest RV Show



Eventually I made my way over to the [Heartland RV](#) display where I ran into an old friend, Jim Beletti. Jim is the President of the Heartland RV Owners Club and the Director of Owner's Interests for Heartland RV. He was excited about a brand new 2015 Landmark 365 Newport 5th wheel on display. Jim said they were designing this 5th wheel with full-timers in mind, so I thought I would take a closer look. Watch my interview with Jim to see more.



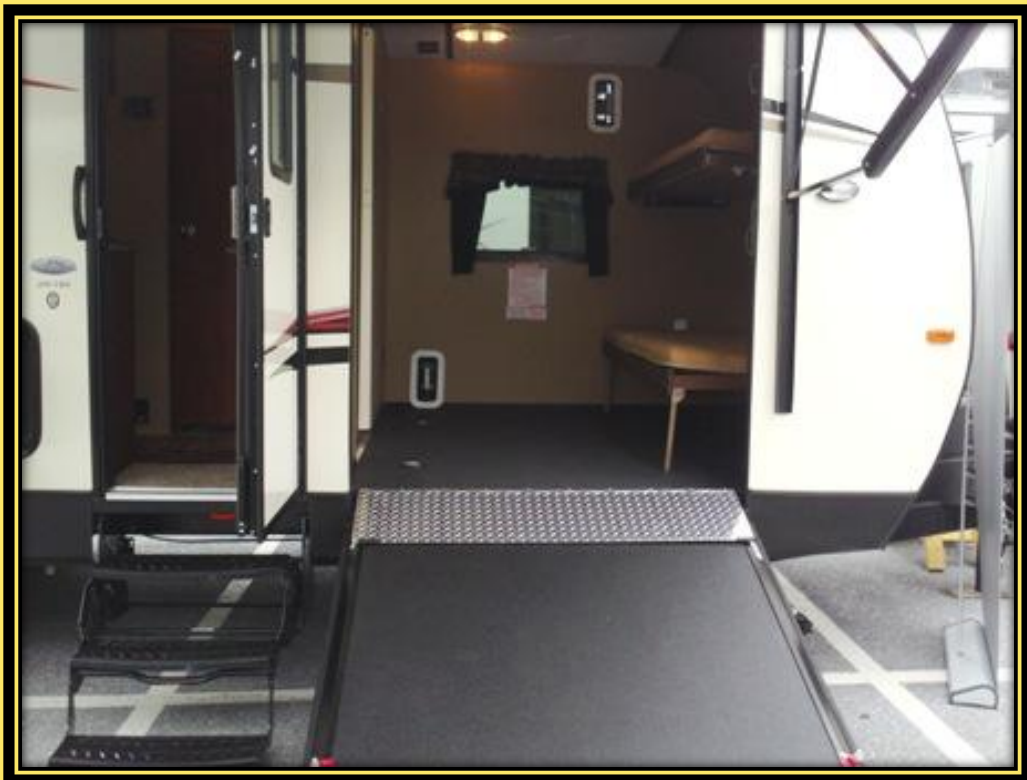
[Watch 2015 Landmark Video](#)

RV 2015 Special Preview

Toy haulers have continued to gain in popularity, and they are available in every type and size of RV imaginable. You can get a toy hauler in a travel trailer, a 5th wheel trailer or a motorhome. I didn't see lots of changes in the toy haulers, but I did run across this one with a side ramp entrance.



It was a [Keystone Outback Terrain](#) and it featured a rear slide-out with a king size bed, and bunks in the front where the ramp is located.



Inside America's Largest RV Show

As I navigate through the maze of RVs I always find it interesting to see the contrast between the various sizes, shapes and types of RVs, and to think how diverse people are when it comes to selecting and using RVs. Of course that is why there are so many different sizes, shapes and types of RVs in the first place. But the contrast between a 23-foot type B motorhome and a 42-foot type A motorhome really is significant. Just for fun let's take a quick look at a couple of Itasca motorhomes for comparison.



The [2015 Itasca Viva](#) on the left is 23 feet long and retails for \$92,635 . The [2015 Itasca Ellipse Ultra](#) is 42 feet long and retails for \$433,965. The Viva's interior is compact and organized while the Ellipse interior is robust and spacious.



Everybody is different and that is why there are large RVs, small RVs, towable & motorized RVs and park model RVs. It's important that you think about which type and size RV is right for you and how you plan to use it before you purchase the RV.

RV 2015 Special Preview

If you purchase a towable RV you need a truck that is capable of safely towing the RV, and tow ratings continue to climb higher and higher between the competitors. The problem I have with truck tow ratings is until now manufacturers have used their own methods for determining tow ratings. And when you assign a tow rating using these various methods does it mean the truck can comfortably and safely tow the amount of weight the manufacturer claims it can?



For years the Society of Automotive Engineers (SAE) has attempted to standardize a method for determining tow vehicle Gross Combined Weight Rating (GCWR) and trailer weight ratings.

In 2008 several truck manufacturers came on board voluntarily to adopt a new SAE J2807 towing standard, but when one manufacturer decided to hold off on testing under the new standard others followed suit. Toyota was the first to start using the J2807 standard. Now nearly seven years later it is my understanding that Ford, Dodge and Chevrolet will adopt the J2807 standard for rating the 2015 truck line-ups. It took awhile, but I applaud these manufacturers for finally measuring the truck's performance against a real standard.

So, let the chips fall where they may amongst the truck competitors, but the real winner is the consumer! Now when you go to purchase a truck to tow that 7,000 pound trailer you will get a better idea of what the trucks real capabilities are.

[Read some articles pertaining to SAE J2807](#)

Inside America's Largest RV Show

Another RV type that is gaining in popularity is the park model or recreational park trailer. The Recreation Vehicle Industry Association (RVIA) classifies a park model as a trailer-type RV that is designed to provide temporary accommodation for recreation, camping or seasonal use. They are built on a single chassis, mounted on wheels and have a gross trailer area not exceeding 400 square feet in the set-up mode.

For the most part there are two styles of park model trailers. One is less than 8 ½ feet wide and designed for more frequent travel similar to a travel trailer.



The other type (pictured above right) is wider and styled similar to a cottage. These type park models require special equipment and permits to transport.

Park model trailers are primarily intended to be set-up at a campground or resort destination and left there



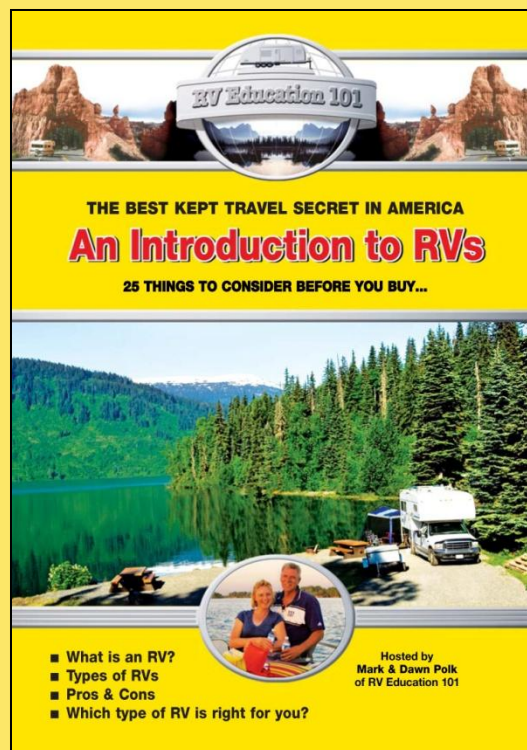
year-round. You normally pay for lot rent and utilities on a long-term basis. The owner can use it as a weekend getaway or as a summer home. Some people set the park model trailer up at their favorite camping destination just a couple hours drive from their home while others use it as a retreat to escape from the colder climates and enjoy warmer weather.



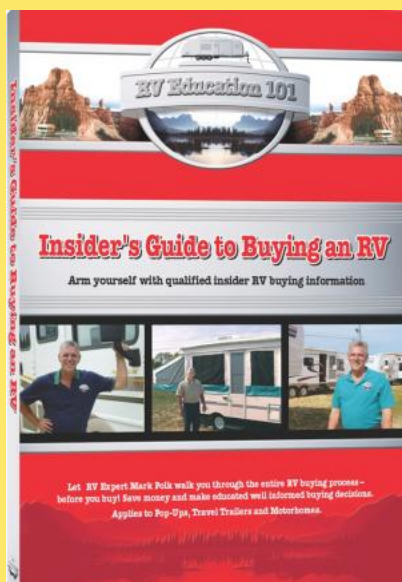
Interiors are furnished and spacious and usually come equipped with residential style appliances rather than the type you typically find in other recreation vehicles.

RV Buyer's Resources

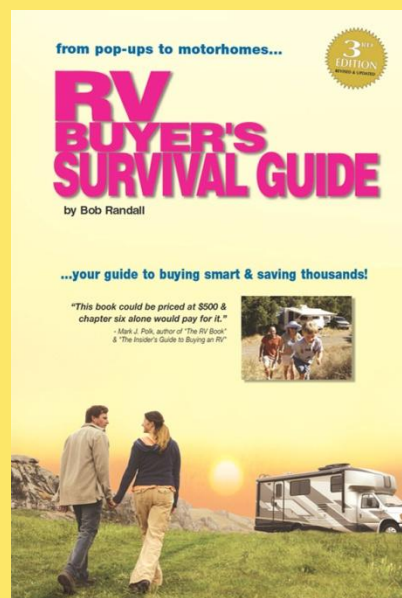
If you are in the market for an RV we offer several RV buyer resources that not only help in deciding which type of RV is right for you, but can also save you thousands of dollars when you are ready to buy.



[An Introduction to RVs DVD](#)



Insider Guide [E-book](#) / [Paperback](#)



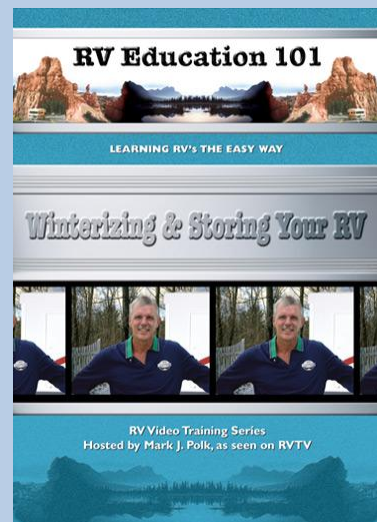
RV Buyer's Guide [E-book](#) / [Paperback](#)

RV Winter Prep

When colder month's start approaching some folks around the country start thinking about storing their RV until next spring. If your RV is prepared for the cold weather and stored properly it will be ready to use next spring when you remove it from storage.

Preparing your RV for winter storage is not that difficult to do. If you are a Do-It-Yourselfer we offer a [Winterizing & Storing DVD](#) to assist you. Why not save some time and money by winterizing the RV yourself ?

[**MORE INFO**](#)



PICK 6 for \$60

Do you need information on RV Towing, RV Driving, RV Systems, RV Maintenance, RV Safety or other RV related topics?

Our Pick 6 for \$60 is the best value on the web. Pick any 6 single DVD titles and pay just \$10.00 per title.

Insider TIP: Each additional DVD added to your order will receive the same discount: 7 for \$70, 8 for \$80 etc.

Now you can select and build your own RV DVD library based on your specific needs, and get the best price we ever offered at the same time. This offer may only be available for a limited time so act now.

To get this special discounted price [you must go here](#) and pick from the 14 DVD titles on this page.



RV 2015 Recap

By Mark Polk



If you are thinking about purchasing an RV this fall, or in 2015 attend some RV shows and do some comparisons for yourself. There are many different types of RVs and many different manufacturers. To recap the Pennsylvania RV & Camping Show this year there were pop ups and hybrid trailers on display



America's Largest RV Show



There were really small travel trailers and off-road travel trailers



RV 2015 Recap



There were lightweight travel trailers and conventional travel trailers



America's Largest RV Show



[Palomino RV](#)

There were truck campers and other kinds of truck campers



[Gearhouse Locker](#)

RV 2015 Recap



There were toy haulers and park model trailers



America's Largest RV Show



[Winnebago Travato](#)

There were type B motorhomes and B plus motorhomes



[Itasca Navion](#)

RV 2015 Recap



[Forest River Sunseeker](#)

There were type C motorhomes and Type A motorhomes



[Winnebago Adventurer](#)

America's Largest RV Show



And luxury diesel pushers



RV 2015 Recap



And there were RV parts and vendor displays

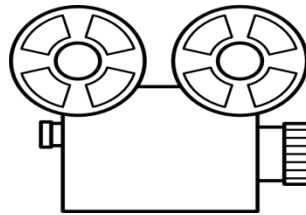
The 2014 Pennsylvania RV & Camping Show was a huge success again this year and well worth the trip. It helps confirm that the RV industry is alive and well. I am already looking forward to next year's show, but first I still have the National RV Show in Louisville, Ky. this December. I'll keep you posted on what's new there as well. Happy Camping

RV Product Spotlight

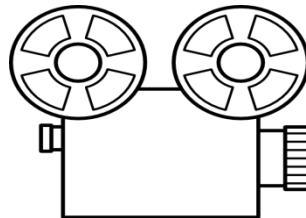
RV Product Spotlight



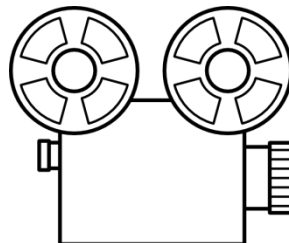
An RV sewer hose is a sewer hose is a sewer hose. If you have been told this in the past don't believe it. Not all RV sewer hoses are created equal. As a matter of fact you could probably say good, better & best when it comes to RV sewer hoses. Let me show you three good examples of what I am talking about



[Watch EZ Coupler Video](#)



[Watch Dominator Video](#)



[Watch Viper Video](#)

Getting to

RV Water Heater Tune-Up [presented by KOA](#)



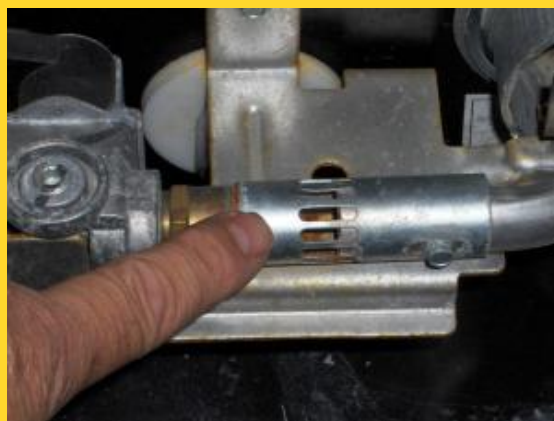
In this RV DIY article we're going to discuss how to give your RV water heater a quick tune-up. Twice a year at a minimum I like to clean and service the RV water heater. Mud daubers and other insects like to build nests in and around LP gas appliances, and your water heater is exposed to the outside elements, so it's a good idea to perform this periodic preventive maintenance.



Insects, dirt and debris around the burner tube can result in poor combustion and ignition issues. A properly burning RV water heater makes a roaring sound and has a nice

strong blue flame. If you don't hear that roaring sound or you notice a weak yellow flame there might be an obstruction in the burner tube.

Make sure the water heater is turned off and allow sufficient time for it to cool down. Before we clean the burner tube I like to use compressed air to clean the front of the water heater, and in and around the flue area. **Caution:** Always wear eye protection when using an air compressor.



Now we can clean the burner tube. **Caution:** Always make sure the water heater has time to cool prior to draining or working on it. Remove the air shutter screw and slide the shutter down the tube. Use a flexible wire

brush and run it back and forth in the tube to remove any dirt and debris. Blow compressed air through the burner tube to clean remaining loose debris. Place the shutter back in its original position and reinstall the screw.

The last step to our water heater tune-up is to flush the water heater tank. Mineral deposits collect in the bottom of the tank and the only way to get them out is to back flush the tank. Turn off any water supply going to the RV and make sure the water in the tank is cool. Relieve pressure on the water system by opening a hot water faucet in the RV. Remove the drain plug and drain the water heater tank.

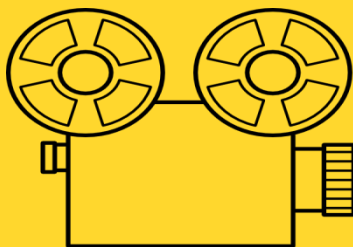


Attach an aftermarket flushing wand

(like pictured) to a hose and place the wand in the drain plug opening. Turn the water on and move the wand around allowing city water pressure to agitate the bottom of the water heater tank and drain all of the mineral deposits and debris out of the tank drain. Flush the tank for several minutes or until clear clean water is running out of the drain.

Note: Suburban water heaters use an anode rod to collect mineral deposits that can be harmful to the water heater tank. You should replace the anode rod when $\frac{3}{4}$ of the anode rod surface is gone.

Back flush for 5 to 10 minutes to remove all the sediment and debris. When you are finished drain the remaining water from the tank and reinstall the drain plug or anode rod. These are preventive maintenance steps the RV owner can perform to keep the water heater in top operating condition. If there are other problems with the water heater you should have it checked by a qualified RV service facility. ~ **RV 101**



[Watch Water Heater Tune-Up Video](#)

How will you
Remember
your travels?



*The laptop we would've used to
keep in touch with the kids.*



*Cook's Field, the week after we
missed the Bluegrass Festival.*



*The guy from Ed's Towing.
Spent three hours with him.*

Not all insurance is equal. Just because you have your RV insured, doesn't mean your whole RV experience is covered. Things like personal effects coverage, vacation liability, and towing expenses are frequently left out of other carriers' policies. But at Explorer RV, we believe it's more than just your RV we're covering. It's the travels, the good times, the memories. Visit us online to learn more or to get a quote.

PROTECTING YOUR RV. PROTECTING YOUR MEMORIES.

EXPLORER RV
INSURANCE AGENCY, INC.

[Get a Free Quote](#)



5 Trailer Towing Quick Tips



Towing a travel trailer safely and properly can be a daunting task until you have some experience. Today I would like to offer you 5 trailer towing quick tips to help answer some of your questions about safely towing a travel trailer.

1) A tow vehicle that is four-wheel drive will have a lower tow rating than an identical vehicle that is two-wheel drive. The reason for this is the transfer case in the four-wheel drive vehicle adds additional weight to the vehicle (usually about 500 pounds) which lowers the tow rating by that amount. Keep in mind that any weight you add to the tow vehicle takes that same amount away from the tow rating.

2) With your tow vehicle and trailer connected on a level surface stand back and look at it. If the lowest point is where the trailer tongue coupler sits on the ball mount you need to talk to your RV dealer about a weight distribution hitch. If you have a weight distribution hitch and it is still the lowest point between the tow vehicle and trailer the weight distribution hitch head and bars may need to be adjusted.

3) Tongue Weight (TW) is the amount of the trailers weight that is pressing down on the hitch ball. TW is a critical factor in how well the trailer will tow. Ideally for trailers that weigh over 2,000 pounds TW should be 10 to 15 percent of the loaded trailer weight. Take the Gross Trailer Weight (GTW), which is the actual weight of the loaded trailer, and multiply it by .10 and .15. This will give you the tongue load range you want to be in. Too much TW can cause poor steering, handling and braking. Too little TW can cause the tow vehicles rear wheels to lose traction and contribute to trailer sway.

4) Every component in a towing system has a weight rating. Never exceed the lowest rated component in the system. For example, your tow vehicle might be rated to tow 7,000 pounds, but if the hitch receiver on the tow vehicle is rated for 5,000 pounds that is the most you can tow with the vehicle.

5) One weight rating that is often times overlooked is the tow vehicle Gross Combined Weight Rating (GCWR). This applies to any vehicle pulling a trailer or any motor home pulling a vehicle or trailer. The GCWR is the maximum permissible weight of the tow vehicle and trailer **combined**, when both are fully loaded for travel. Look for the GCWR on weight labels or in the vehicle owner's manual. Never exceed the GCWR.
~RV101

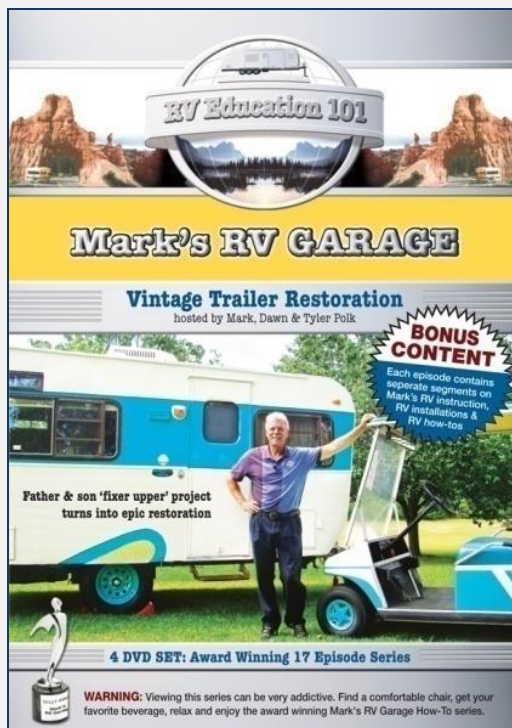
Check out our complete line of [RV training products](#) to help make all of your RV experiences safe, fun and stress-free.



Having the right insurance coverage on your RV is important when you need it.. Get a free quote from Explorer RV Insurance.

[Get your free RV Insurance Quote](#)



Check out the step-by-step vintage travel trailer restoration project and other great RV information and RV educational material in the award winning Mark's RV Garage Series 4-DVD set. On SALE NOW for ONLY \$29.95 [More Info](#)



**BatteryMINDER®**

Charger - Maintainer - Desulfator - Conditioners
The Only Charger You Will Ever Need...

batteryminders.com800.379.5579 (ET)

Tired of dead batteries?
Stop the problem for good with the charger, maintainer & conditioner that Mark uses on all his batteries.
[The Battery Minder](#)

Camping Recipe: Lemon-Herbed Sweet & White Potatoes



Phyllis Hinz and Lamont Mackay



Lemon-Herbed Sweet & White Potatoes (Makes 2 servings)

- 1 medium white potato, unpeeled
- 1 medium sweet potato, peeled
- 1 tablespoon (15 ml) olive oil
- 2 tablespoons (30 ml) fresh lemon juice
- 1/2 tablespoon (7.5 ml) dried rosemary, crumbled
- 1/8 teaspoon (.63 ml) salt
- 1/8 teaspoon (.63 ml) pepper
- heavy-duty aluminum foil
- 1/4 teaspoon (1.25 ml) olive oil

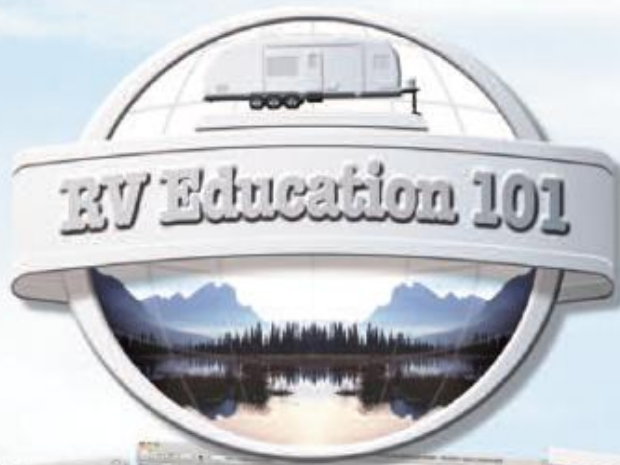
The Cooking Ladies, Phyllis Hinz and Lamont Mackay, are freelance writers, restaurant consultants, cookbook authors, event speakers, and RVers. Please take a minute to visit their website: www.thecookingladies.com

- Cut the unpeeled white potato into 1/4-inch thick rounds.
- Cut the peeled sweet potato into 1/4-inch thick rounds.
- In a bowl, mix the olive oil, lemon juice, rosemary, salt, and pepper. Set aside.
- Place a large piece of heavy-duty aluminum foil on the counter. Drop the 1/2 teaspoon of olive oil onto the center of the foil.
- Spread the oil over the center of the foil.
- Create a row of potato slices in the middle of the foil with alternating white and orange-colored slices.
- Brush the oil, lemon, and herb mixture over the sliced potatoes. Let the mixture trickle between and around the potato slices.
- Seal the foil around the potatoes leaving an air pocket inside for steaming.
- Preheat the grill on high for 10 minutes. Turn the heat down to medium and place the potato package on the grate.
- With lid closed, grill the potato package for 20 to 25 minutes or until the potatoes are soft.
- Turn the package over half way through the grilling time.

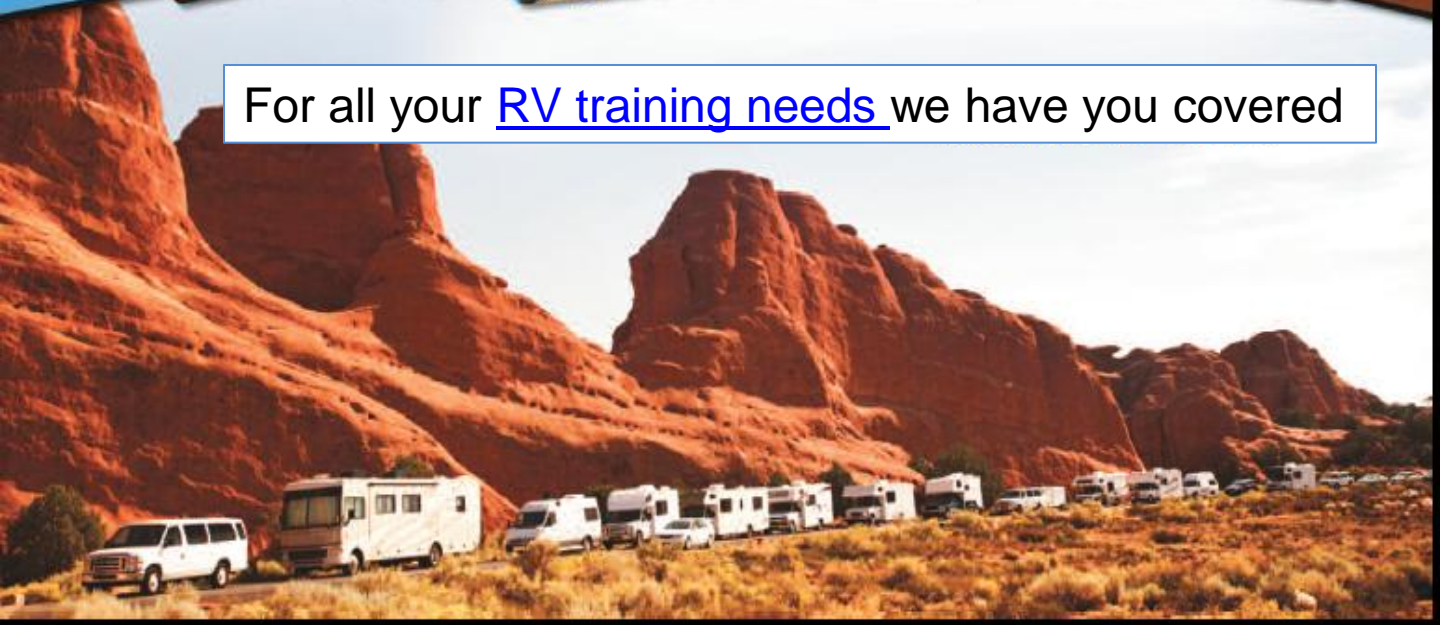
[Happy Hour Recipes PDF E-book](#)

This #1 best selling e-book is the first in The Cooking Ladies' Favorite series. And to make this cookbook even more outstanding, The Cooking Ladies have included a photo of each finished dish. Recipe ingredients are given in both Imperial and metric measurements.

[Learn more](#)
about our
products



For all your [RV training needs](#) we have you covered





RV UNIVERSITY.com

Welcome to the U of RV



RV Consumer E-Magazine Archives

Did you miss previous issues of RV Consumer e-Magazine? Catch up on all the information packed issues right here.

Happy RV Learning

[Go To Archives now](#)



RV Education 101
Learning RVs the Easy Way
with MARK POLK

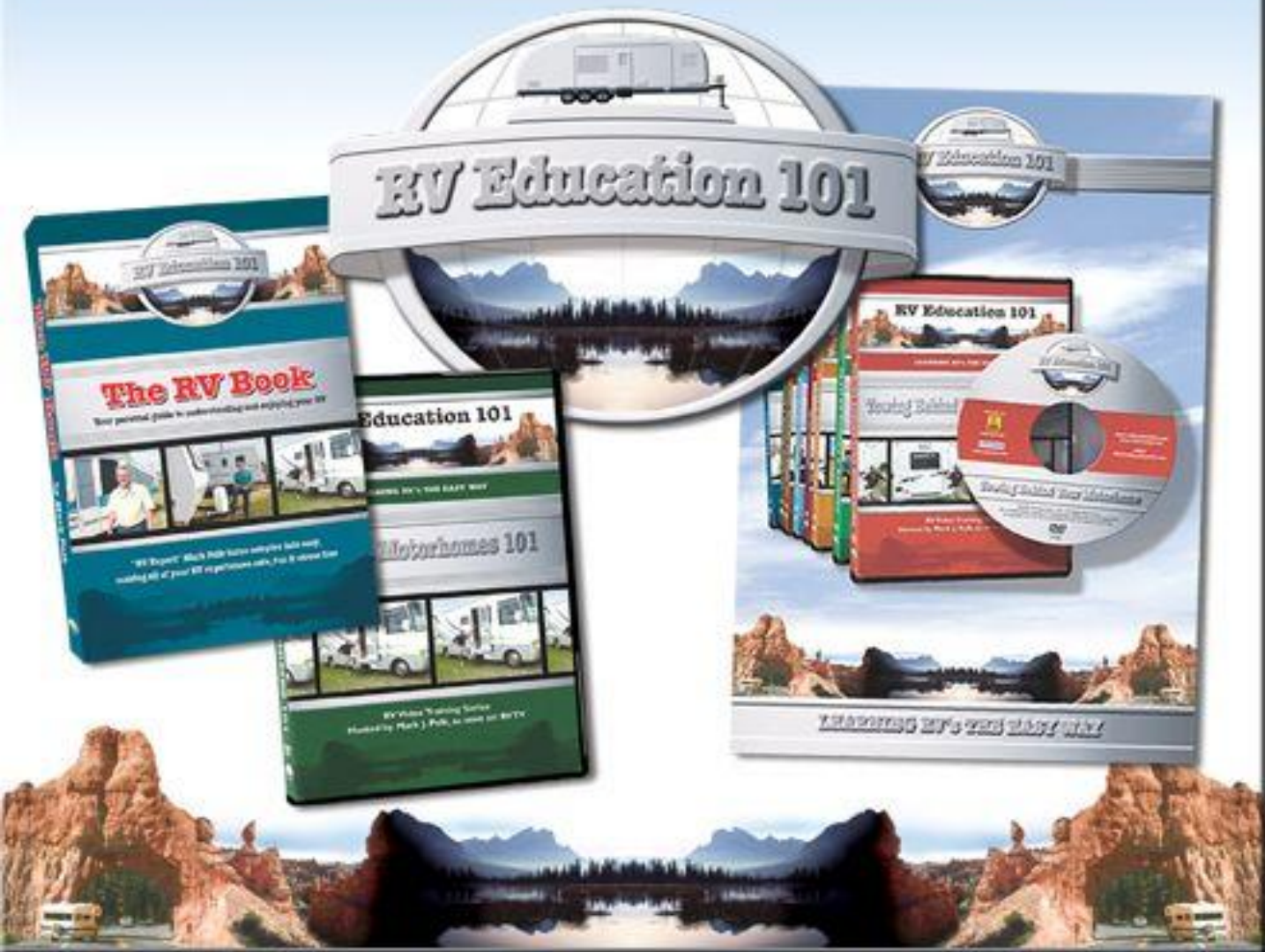
Americas most popular RV Training Series

Videos, Books, E-books

Looking for a bargain on some RV training materials? Check out Box Set deals in our Bargain Room [BARGAIN ROOM](#)



RV Training Resources



RV EDUCATION 101: TRAINING MATERIALS

[Click here to view our complete line of RV Training Products](#)

Visit our Sponsors



www.koa.com



www.rvtrader.com



www.explorerrv.com



www.vdcelectronics.com



www.goodsamesp.com



www.equalizerhitch.com



www.rvconsumer.com



www.rvconsumer.com

General & Unsubscribe Information

Our goal with RV Consumer E-Magazine is to provide you with helpful information to make all of your RV experiences more enjoyable. I left my position as an RV Sales and F&I manager in 2000 to start RV Education 101.

We produce RV educational videos & DVDs and publish books and e-books on how to safely & properly use and maintain your RV. The reason I left my job was because of my concern about the lack of educational and safety awareness material available to the RV consumer, in other words you.

My wife Dawn left her position in RV sales to help start the company, and is our Sales and Marketing Director. We currently have a 35-foot Class A motor home. We have two boys, Tyler 17 and Josh 23, both avid RVers and two dogs, Roxie and Gracie. If you would like to learn more about us and about RV Education 101 please visit www.rveducation101.com

RV Consumer E-Magazine, Copyright 2011,2012,2013, 2014 Mark J. Polk except where indicated otherwise. All Rights Reserved worldwide. Reprint only with permission from copyright holder(s). All trademarks are the property of their respective owners. All content provided as is. Not all content may be the opinion of the RV Consumer Magazine editorial staff or of RV Education 101. Advertisers are solely responsible for ad content.

To subscribe please visit [our sign up page](#). All RV Education e-publications are opt-in, available by subscription only. We neither use nor endorse the use of spam. Your e-mail address will only be used to distribute RV Education 101 e-news and will never be sold or given to any other entity.

If you no longer wish to receive e-news from RV Education 101 you can unsubscribe in the e-mail notification you receive in your in box.

RV Education 101
150 Bay Ridge Rd.
Harrells, NC 28444
910-484-7615

Contact:

Mark@rveducation101.com
Dawn@rveducation101.com

